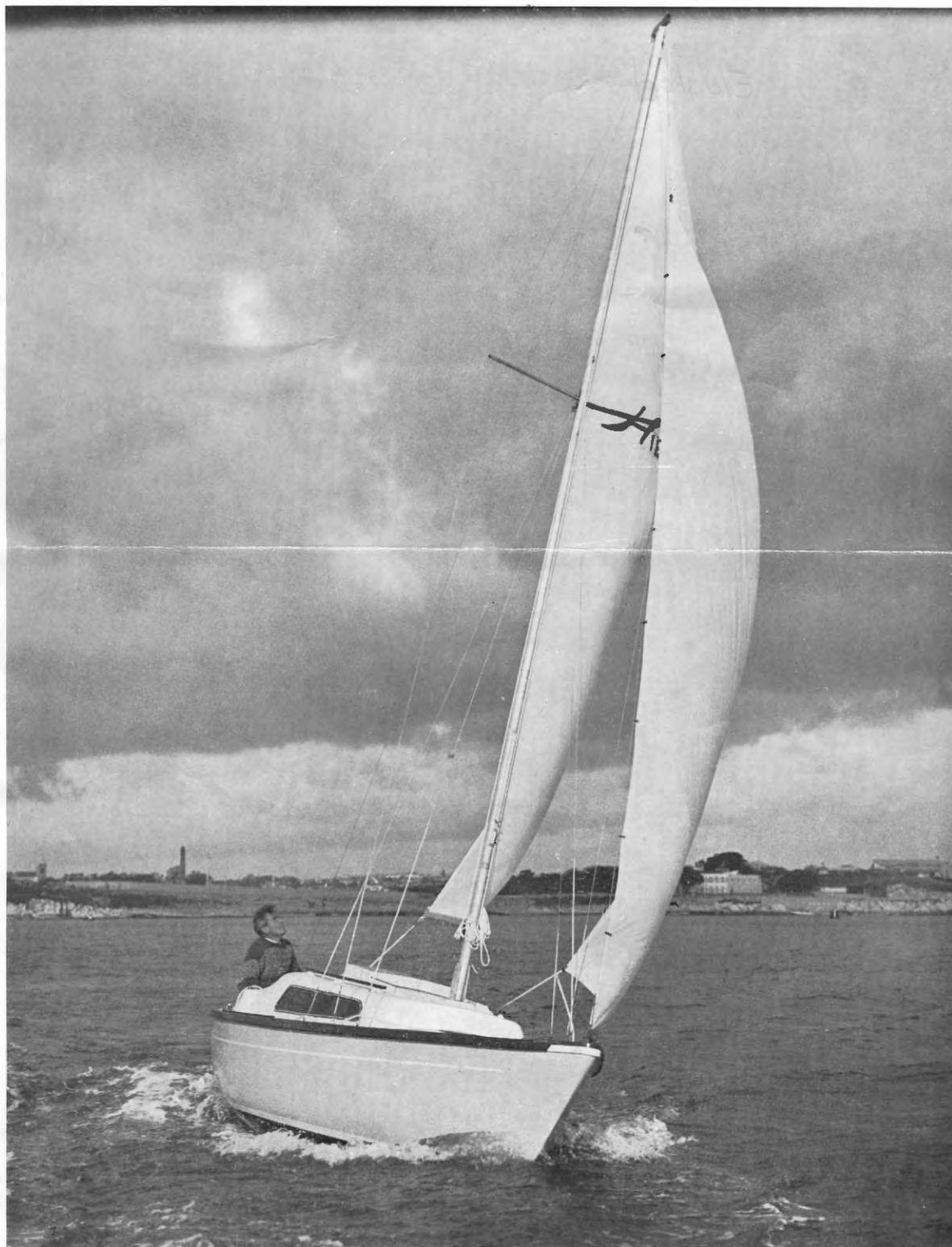


HURLEY 18





Sjöhorn vikes en gång på
längden, hänger ut över och
under kanten på bordet

STANDARD EQUIPMENT

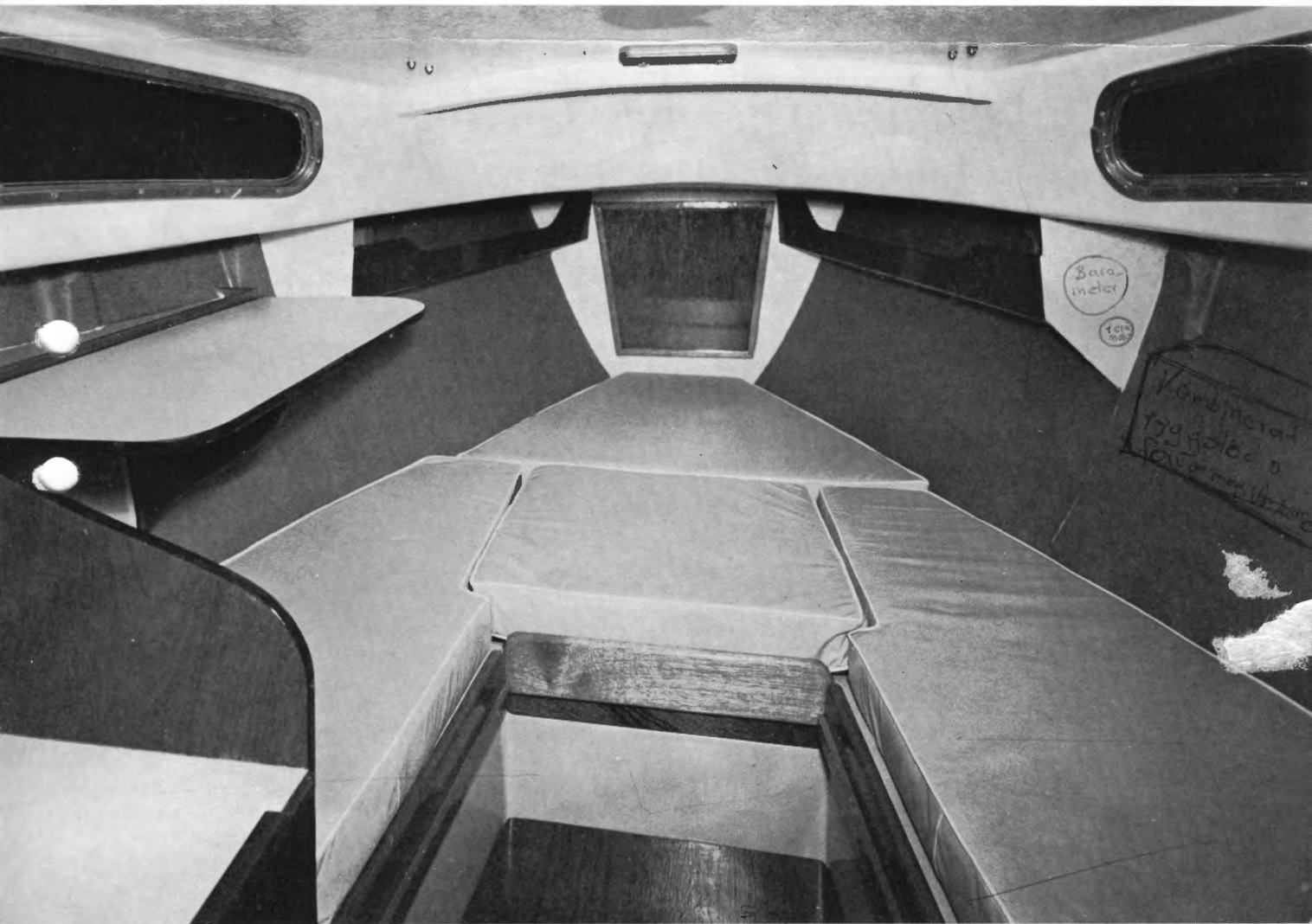
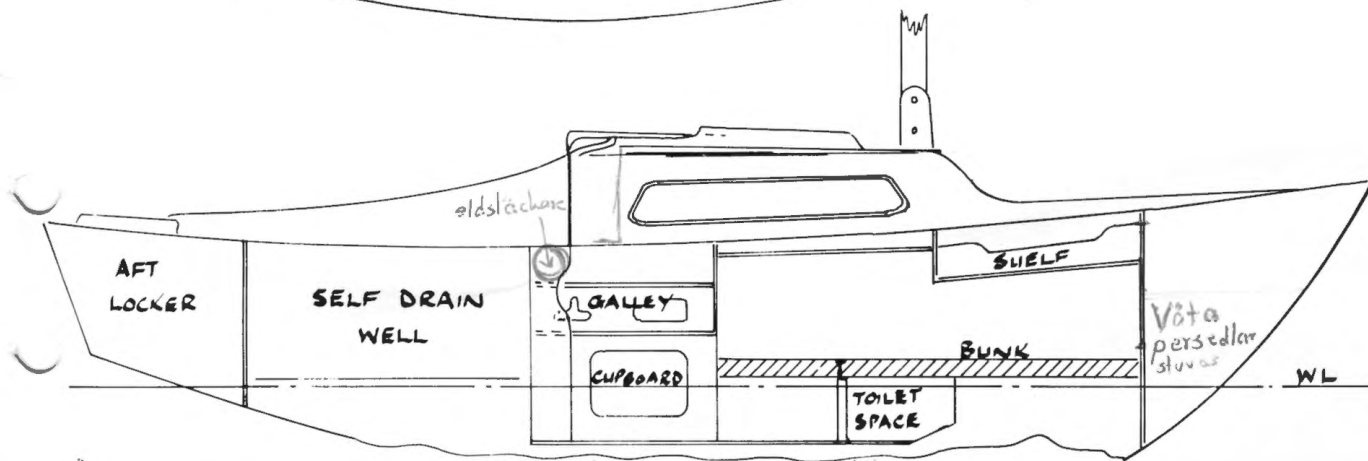
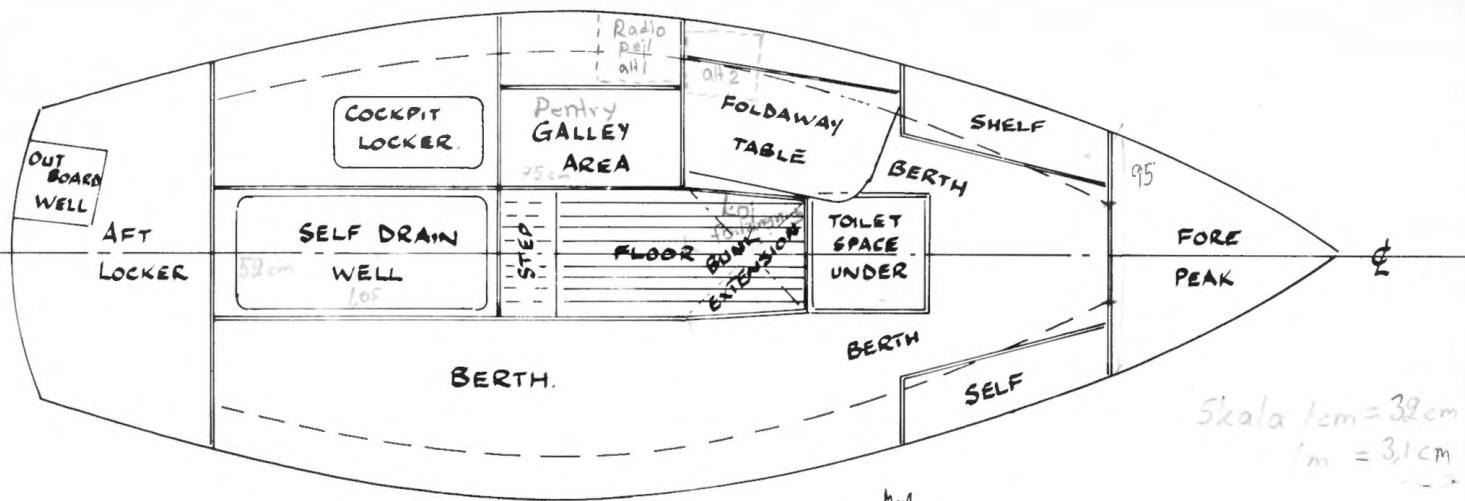
Terylene Mainsail, Working Jib and Sheets, with battens and sail-bag. Running Rigg^{latts} in Ulstron. Aluminium Spars with stainless steel fittings and standing rigging. Gunmetal Deck Fittings, including stemhead roller and 'snap-shackles'. Roller Reefing Gear, Mainsheet Track and 'Tufnol' Blocks. Self-draining Cockpit.

SPECIFICATION

Length, Overall	18' 6" (5.63 m.)
Length, Waterline	14' 6" (4.30 m.)
Beam	6' 8" (1.99 m.)
Draft - Fin Keel	3' 3" (0.99 m.)
Thames Measurement	2.7 tons
Ballast	1,000 lb. (454 kg.)
Displacement	2,350 lb. (1,066 kg.)
Headroom	4' 0" (1.21 m.)
Number of Berths	3
Construction	G.R.P.

SAIL AREAS

Mainsail (5-oz. Terylene)	100 sq. ft. (9.3 qm.)
Working Jib (5-oz. Terylene)	80 sq. ft. (7.4 qm.)
Genoa (5-oz. Terylene)	118 sq. ft. (10.97 qm.)
Spinnaker (2-oz. nylon)	252 sq. ft. (23.45 qm.)
Storm Jib (5-oz. Terylene)	30 sq. ft. (2.79 qm.)



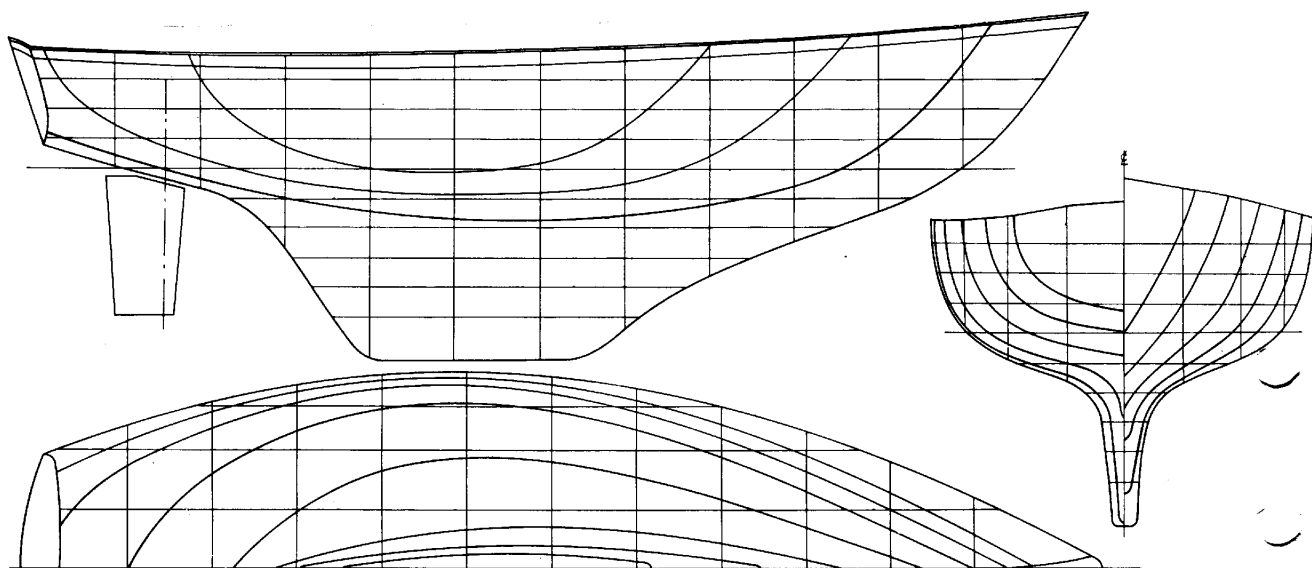
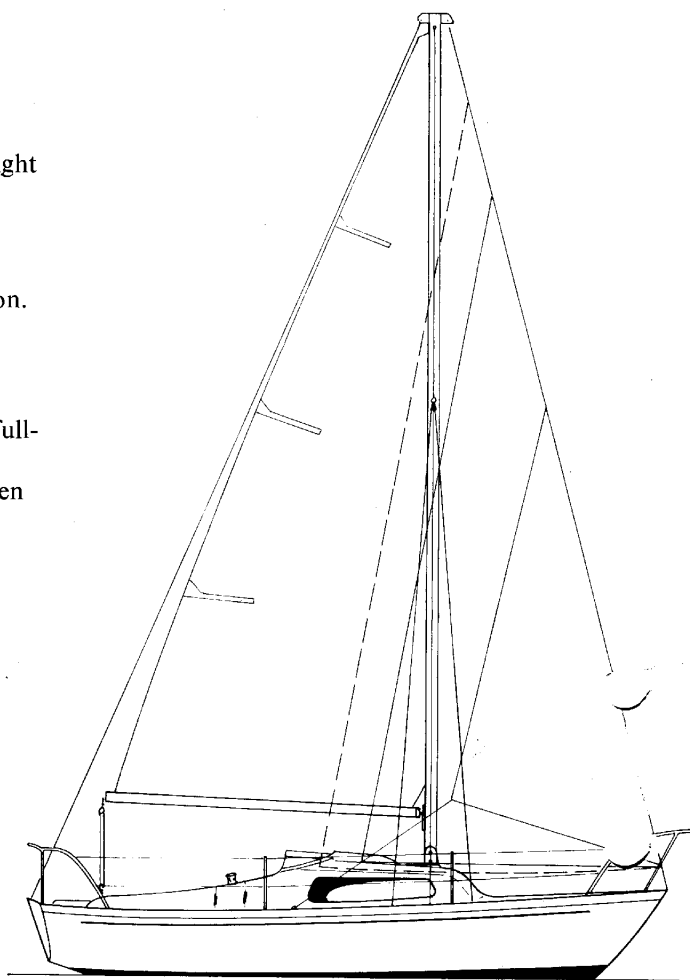
HURLEY 18

The Transatlantic 18, a proven seagoing yacht that looks right and sails well.

FEATURES

- ★ Designed by Ian Anderson and built in fibreglass by Hurley Marine in Lloyd's approved workshops to Lloyd's specification.
- ★ Single-handed Atlantic crossing in 1968.
- ★ Deep keel with good ballast-weight ratio ensures a stiff and comfortable boat at sea.
- ★ Ideal yacht for the offshore couple with room for a friend in full-length quarter-berth.
- ★ Masts, rigging, sails and deck fittings made by our own craftsmen at Hurley's.
- ★ Pulpit, lifelines and pushpit can easily be fitted for the deep-sea yachtsmen.
- ★ Anti-condensation lining in cabin roof and attractive vinyl-type linings makes the cabin warm and friendly.
- ★ Sliding hatch with cover.
- ★ Plenty of ^{stowage} space below.
- ★ Marine toilet, cooker and sink can be fitted for extended cruises.
- ★ Easily trailed on Hurley-made trailer.
- ★ Outboard motor mounted in special transom moulding and can be stowed in cockpit locker.

Welcome aboard!



AGENT:

RUDOLF ALBERT MARIN

The right to modify the design and specification without prior notification is reserved.

Underhill (Plymouth) Ltd., Regent Street



HURLEY MARINE LTD
VALLEY ROAD · PLYMPTON · S. DEVON

PHONE · PLYMOUTH 36601